



# Sustainability in Medicines decision making; RDTC ICS strategic resources and support.

Gavin Mankin and Dan Newsome  
Principal Pharmacists – Medicines Optimisation



**Our aim is to support the safe, effective and efficient use of medicines by the provision of evidence-based information and advice on the therapeutic use of medicines.**

**NHS organisation funded by NHS Stakeholders.**

## What this session will cover

### **A successful Integrated care system needs:**

- Co-ordination of strategic decision-making groups,
- Evidence-based evaluations on medicines,
- Support for new pathway development.

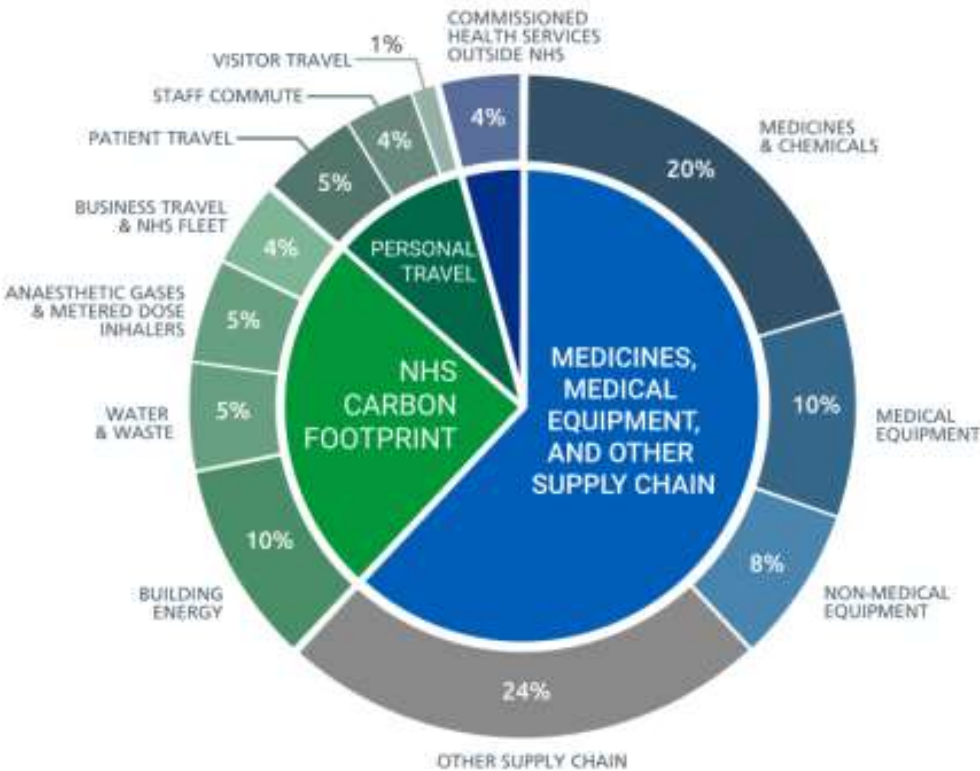
How does the sustainability agenda fit in to this process?

### **This session will cover:**

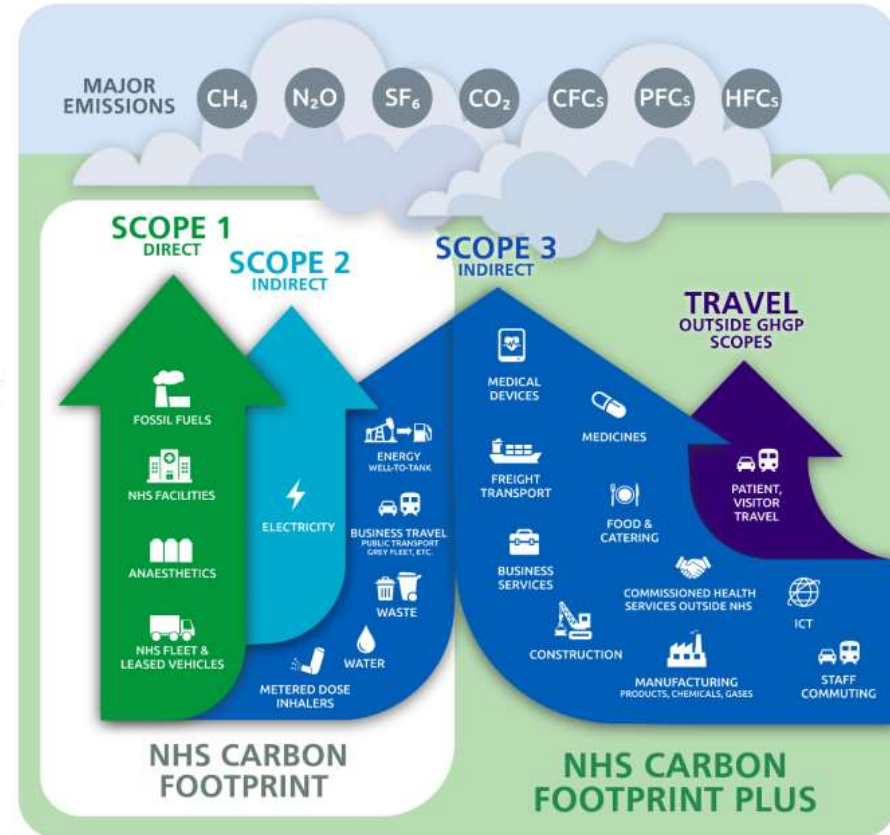
- Opportunities and ideas for how to integrate and support medicines sustainability considerations.
- Specific sustainability resources, tools, publications and forthcoming outputs from the RDTC.

# Delivering a 'NET Zero' NHS (NHSE, 2022)

## Greenhouse gas protocol scopes; NHS



Sources of carbon emissions;  
NHS carbon footprint plus





## **RDTC Strategic Support**

- NTAG
- NENC ICS
- North Yorkshire & York
- Greater Manchester (GMMM)

## RDTC support for sustainability

- Evidence based reviews
- Literature searches
- Prescribing data analysis
- Pathway/Guideline development
- Formulary management and advice
- Population health analysis
- Supports PDSA cycle methodology

## How do we support?

- Networking across the North of England
- Intelligence gathering
- Professional secretariat support
- Facilitation of expert working groups
- Data analysis
- Publication
- Audit/monitoring of impact

## Decision making for sustainability

- Formulary application forms (Screenshot)
- Guideline development process
- Pathway modelling and outcomes
- Sustainability assessment
- Formulary assessment tools





# Decision making for sustainability

- Formulary application forms – NE&Y Form

11. ENVIRONMENTAL SUSTAINABILITY	
<p><b><i>Does this product have a reduced carbon footprint compared to comparators? (If known)</i></b> <i>If yes why/how/evidence?</i></p>	Click or tap here to enter text.
<p><b><i>Does this product have any advantages in terms of packaging?</i></b> <i>If yes – why/how?</i></p>	Click or tap here to enter text.
<p><b><i>Does this product have any advantages in terms of shelf life?</i></b> <i>If yes – why/how?</i></p>	Click or tap here to enter text.
<p><b><i>Does this product have result in less waste compared to comparators?</i></b> <i>If yes – why/how?</i></p>	Click or tap here to enter text.

## RDTC Sustainability publications

- [Reducing the carbon impact of inhalers across the North of England Prescribing bulletin September 2021](#)
- [Inhaler carbon footprint; significance, focus & action Prescribing for Population Health January 2021](#)
- Inhaler Carbon Impact Assessment Tool (updated 6 monthly)
- [Electronic repeat dispensing: Understanding the prescribing population & initial barriers to uptake – RDTC](#)
- Carbon footprint of anaesthetic gases across the NENC ICS.



# Future RDTC Publications

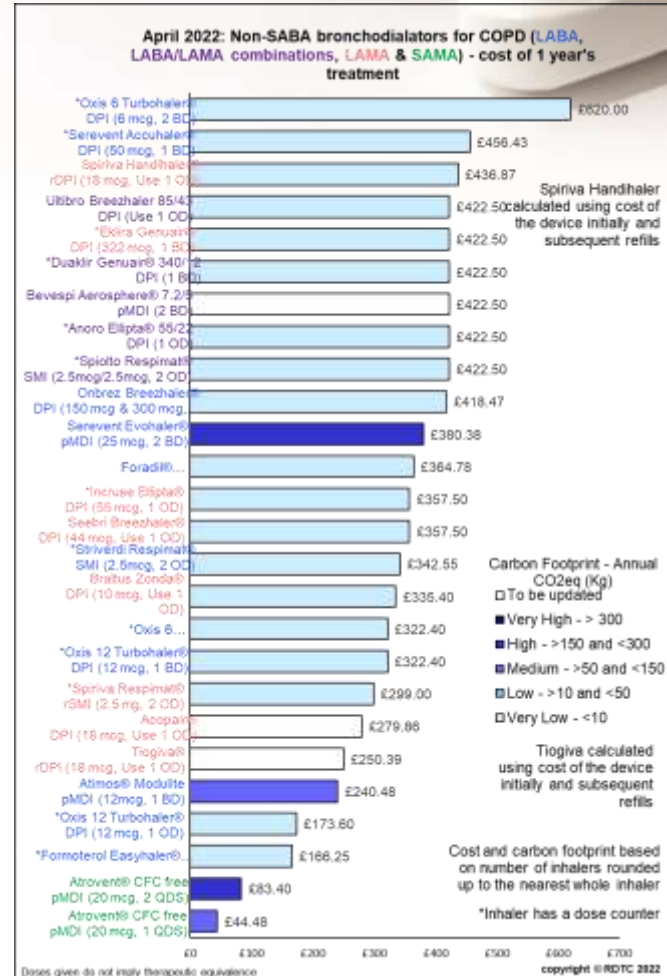
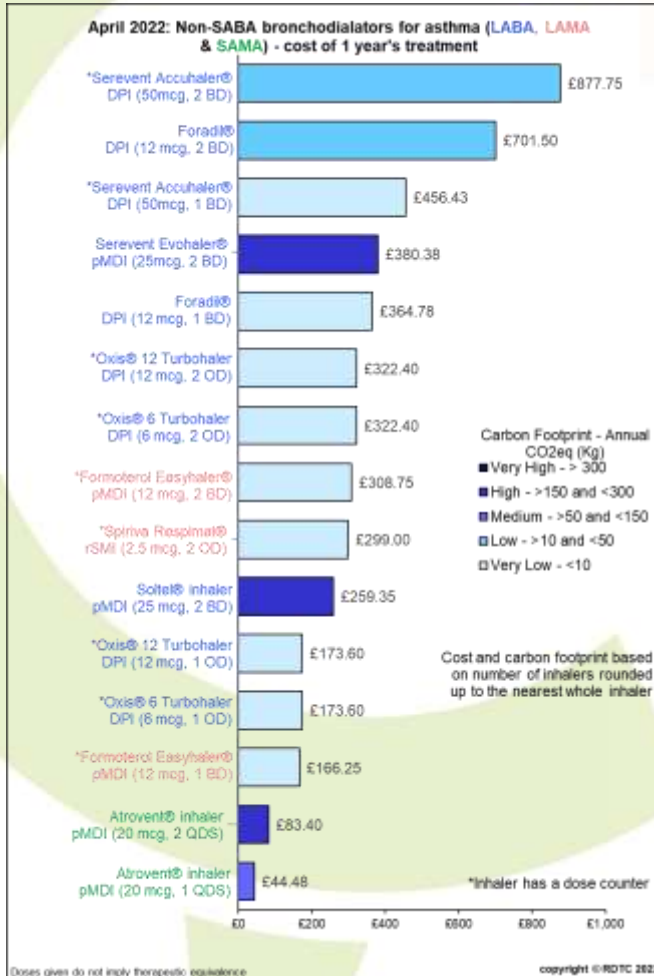
- Inhaler carbon impact assessment tool
  - Prescribing data report, expected Q2.
- Reducing inhaler carbon impact
  - Medicines in Practice, expected Q2
- Disposal of inhalers - Prescribing bulletin
  - Medicines value, expected Q2.
- Sustainability
  - Prescribing for population health, expected Q3.
- Medicines carbon footprint
  - Formulary assessment tool, expected Q3.
- Medicines in Practice
  - Inhaler Sustainability, expected Q2.



## Other RDTC Publications

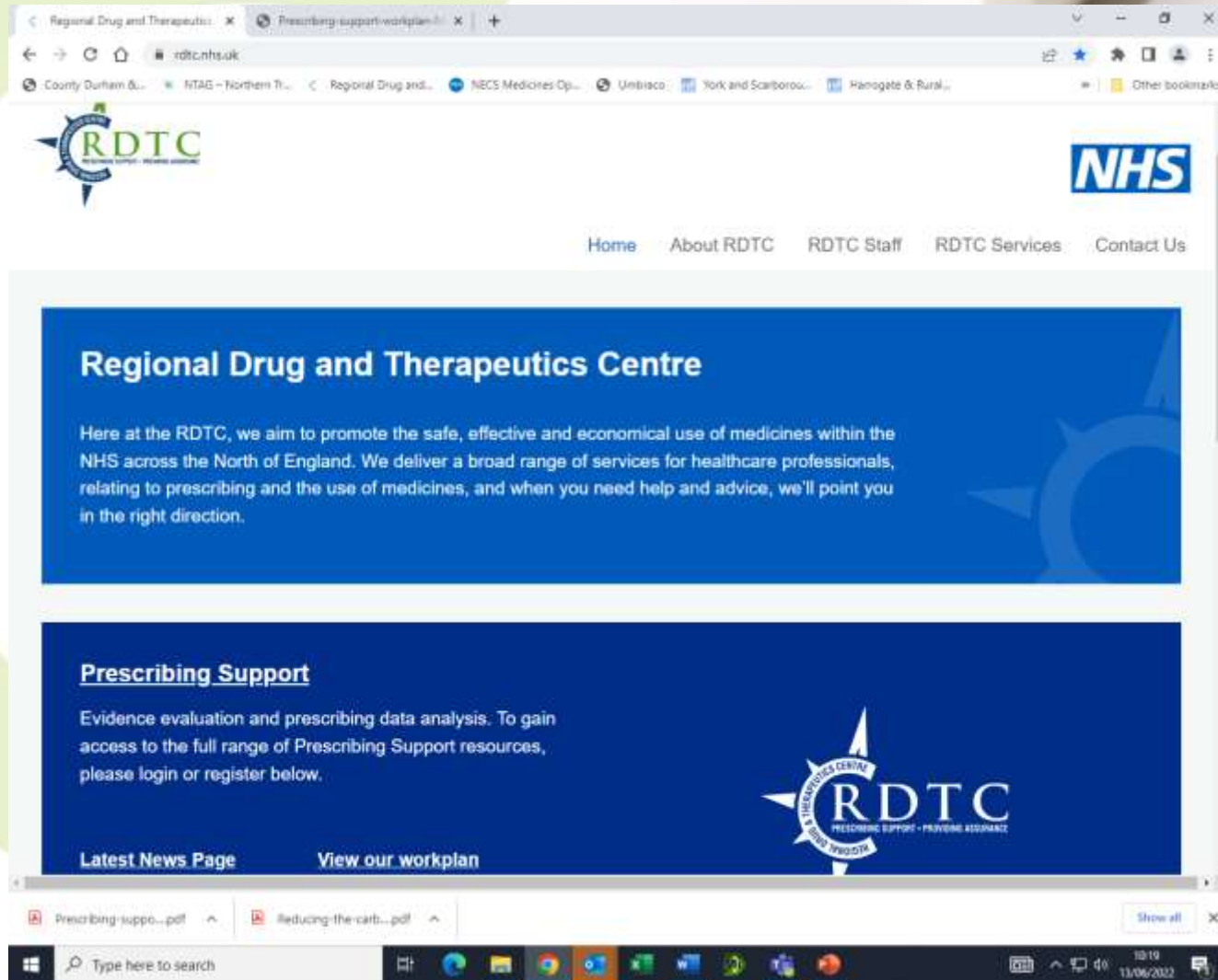
- Quarterly Therapeutic reports
- Cost comparison charts
- Formulary assessment tools

# SABA Cost Comparison Chart





# RDTC website



[www.rdtc.nhs.uk](http://www.rdtc.nhs.uk)





**What do you need?**