



EDoN

Early Detection of
Neurodegenerative
diseases

Prof. Sarah Slight & Sarah Wilson



A global collaboration

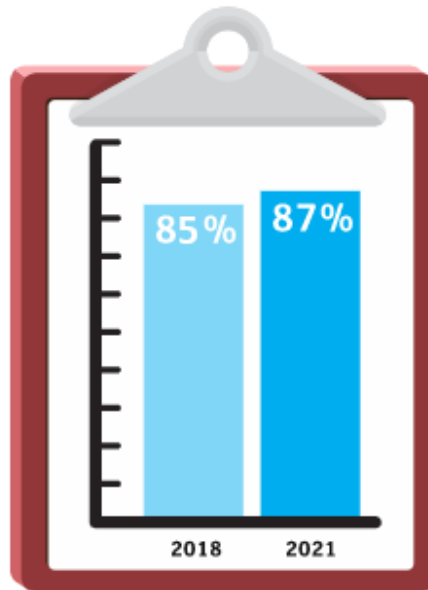
The project



+ Our Future Health

Are the public keen to know?

- The diseases that cause dementia start in the brain up to **two decades** before symptoms show.



Would take the test.

Would take a test, or set of tests, that could tell whether they were in the very early stages of Alzheimer's or another form of dementia, even before any symptoms appeared



EDoN
Early Detection of
Neurodegenerative
diseases

The power of digital data

Subtle changes or 'clues' in our **everyday lives**:



Why is this important?



Encourage lifestyle changes



Identify the right people for clinical trials



Understand disease processes



Test new treatments early



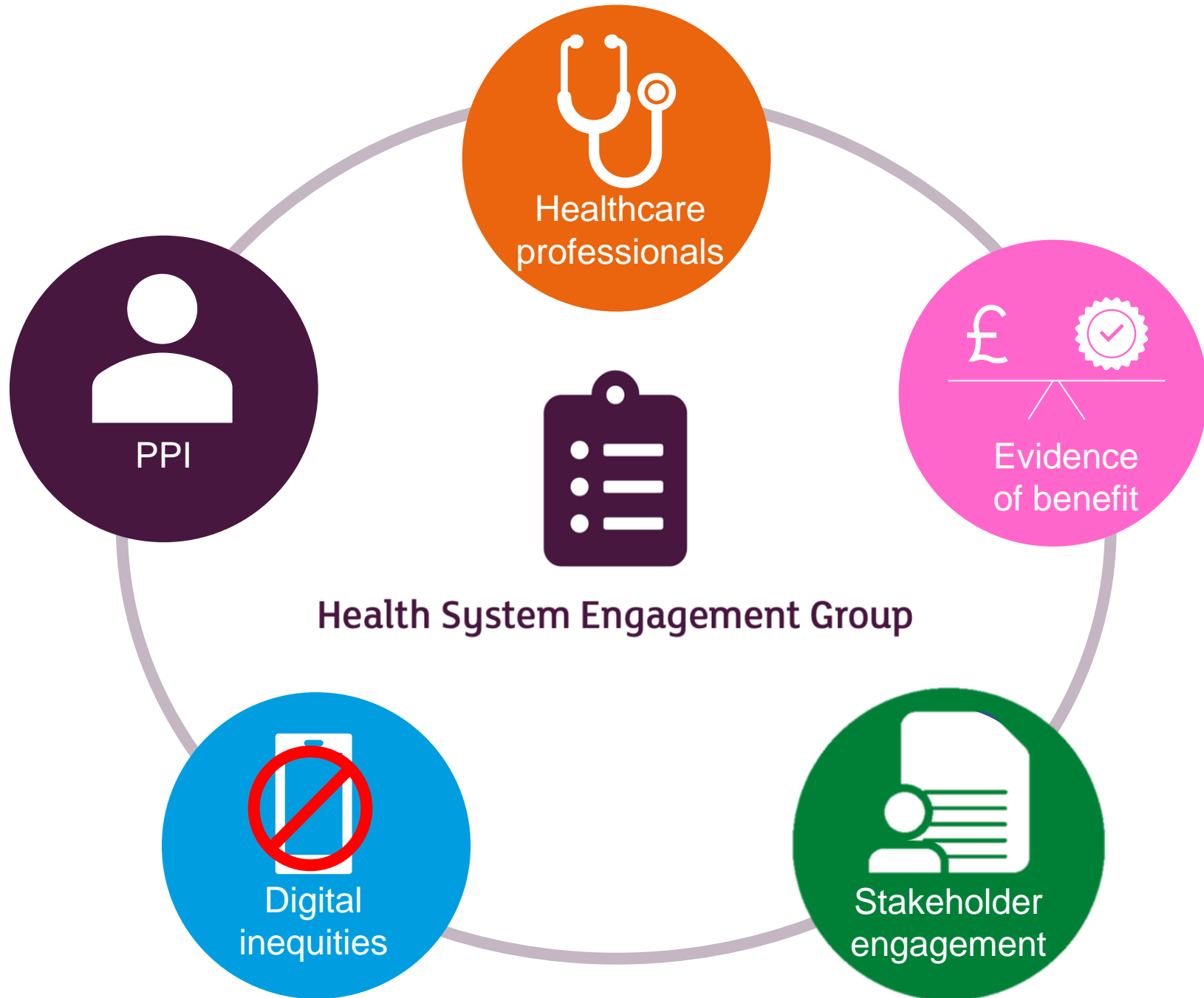
EDoN
Early Detection of
Neurodegenerative
diseases

The Vision of EDoN

To combine digital and clinical data from thousands of volunteers across the world to develop a digital toolkit to identify people at risk of dementia 10-15 years earlier than we can today.

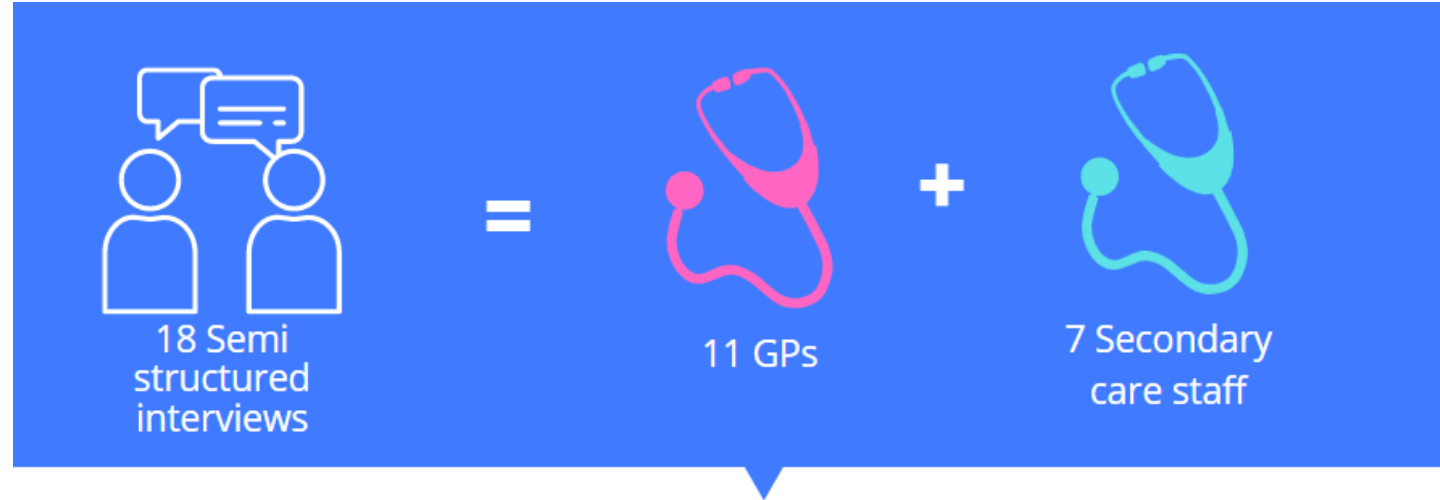


EDoN
Early Detection of
Neurodegenerative
diseases



Healthcare Professionals:

Key considerations



Explored...

The current dementia pathway

Opinions on early detection & use of digital tech

Challenges to implementation



3 categories of concern



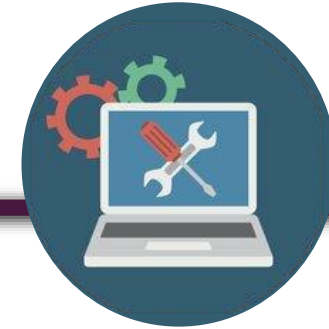
1. Patients

- Target group
- Health disparities
- Impact of early detection



2. Healthcare professionals

- Current clinical pathway
- Governance
- Burden
- Acceptance
- Dissemination of results



3. Digital tool

- Accuracy & feasibility
- Technology appraisals

4 key considerations...

NICE

National Institute for
Health and Care Excellence

Evidence of
accuracy & all
necessary
appraises



Current clinical
pathway & impact
on workload



Training & support
for both patients &
staff with
intervention options



Accessible to all
within a target
population

*“if we’re talking
about screening,
there are very few
forms of
screening that
actually survive
[NICE] scrutiny”*

*“Unfortunately,
we don’t have
the workforce in
secondary care
to manage that
demand”*

*“apprehensive about
giving out a device that
churns out a random
number and I had no
idea about how it was
kind of calculating it”*

*“we don’t have
any tests for
people with
learning
disabilities or
dyslexia”*



Thank you!



EDoN

Early Detection of
Neurodegenerative
diseases

Sarah.Slight@newcastle.ac.uk

Sarah.Wilson@newcastle.ac.uk