

# Haref: Tackling health inequalities



@ConnectedVoice\_#Haref



Connected Voice



Connected Voice

# Why our work is important

Black women in the UK are **four times more likely to die** in pregnancy and childbirth than white women

Black people are **more likely to be hospitalised for their mental health against their wishes** than white people

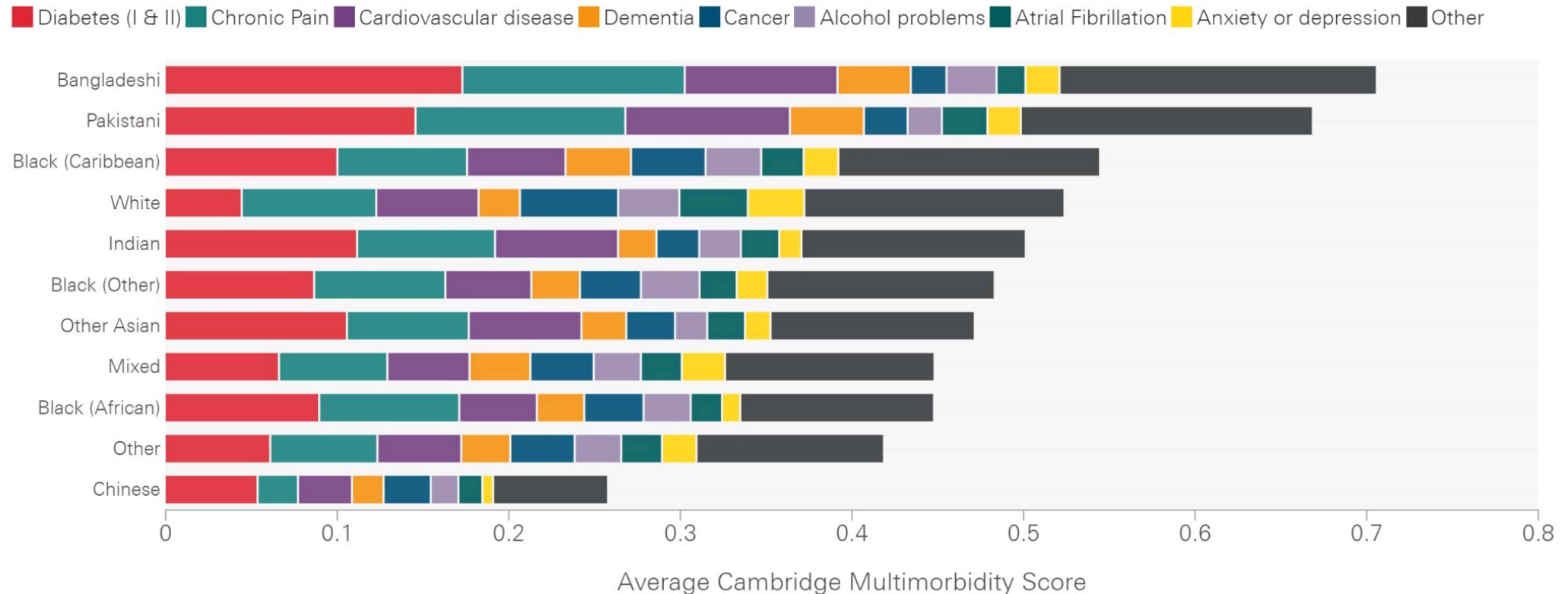
**South Asian people are more likely to develop a physical disability** throughout adulthood compared with White British counterparts

# Are we building in bias?

- Hospitals are also education centres
- The patient model is usually that of white British
- Professionals cannot find reference in medical journals
- Existing inequalities were accelerated during Covid

# There are higher levels of diagnosed ill health in Pakistani, Bangladeshi, and Black Caribbean people than among the white population in England.

Diagnosed illness (average Cambridge Multimorbidity Score) by ethnicity and condition, age-standardised, 2019/20



# Our work at Haref

## The Haref Network

- **Over 70 organisations who are:**
  - A community/voluntary organisation led by people from ethnically marginalised communities **or**
  - An organisation with a targeted project for ethnically marginalised groups
  - Working in Newcastle or Gateshead

# Working with the Haref Network

- Regular Network meetings
- Connect Network members to health services
- Resources and research
- Share information and good practice
- Lobby and campaign

# Haref Allies

## Who are the Haref Allies?

- Learning events
- Collaborative working
- Sharing information and good practice
- Training and support

# Cultural Competency Training

## Cultural Competency

Working with ethnically marginalised people in health settings





# Haref Bulletin

Haref bulletin 20 October 2021



**Connected  
Voice** Haref

**Monthly updates  
from Connected  
Voice Haref**

Welcome to the latest bulletin from [Connected Voice Haref](#) with news and updates on health equality for ethnically minoritised communities in Newcastle, Gateshead and beyond.

# Haref achievements

- Health information sessions
- Good practice guidelines: ‘Delivering health information sessions with diverse community groups
- Ramadan calendars
- Research:
  - Health Inequalities in the age of COVID-19
  - Mental health peer research

# Research with School of Pharmacy

The research will focus on **hospital to home discharge in health and social care**

**Haref will support:**

- **On the Steering Group**
- **Engagement – identifying appropriate community groups to speak to**
- **Event and Dissemination of findings at the end of the project**

# Connected Voice Haref

**We amplify voices.  
We champion equality.  
We inspire change.  
We support action.  
We connect people.**

One Strawberry Lane  
Newcastle, NE1 4BX  
0191 232 7445  
Haref@connectedvoice.org.uk  
www.connectedvoice.org.uk